

Local government coordination in the 1960s in Yokohama : The case of the inner-city motorway undergrounding project



Toshio Taguchi

Akira Tamura Memorial-A Town Planning Research Initiative NPO, Yokohama, Japan.

Background Issues

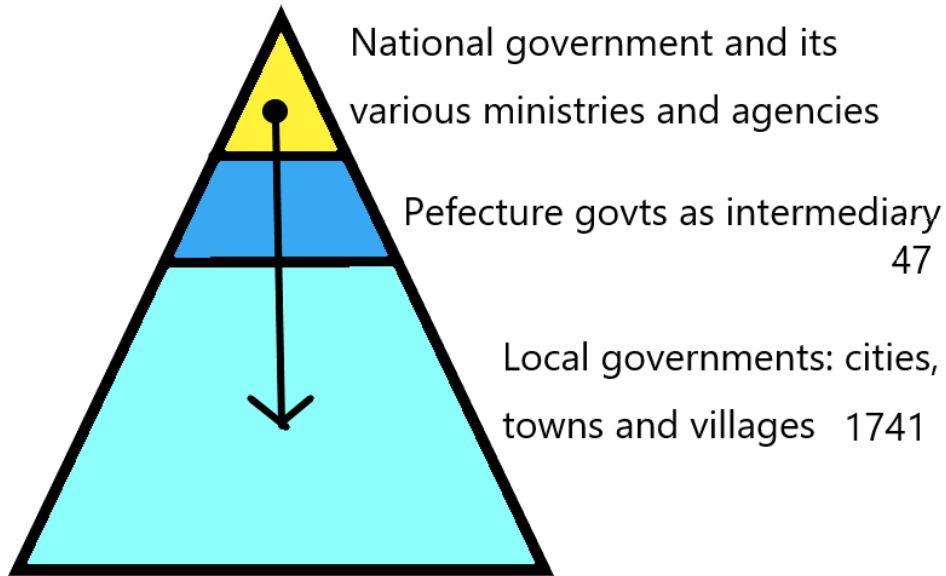
- Inner-city motorway by the Ministry of Construction, Subway by the Ministry of Transport, and Green Spine by Yokohama city
- Redevelopment strategy of city center by Yokohama city after bombardment and requisition by US forces

Research Questions

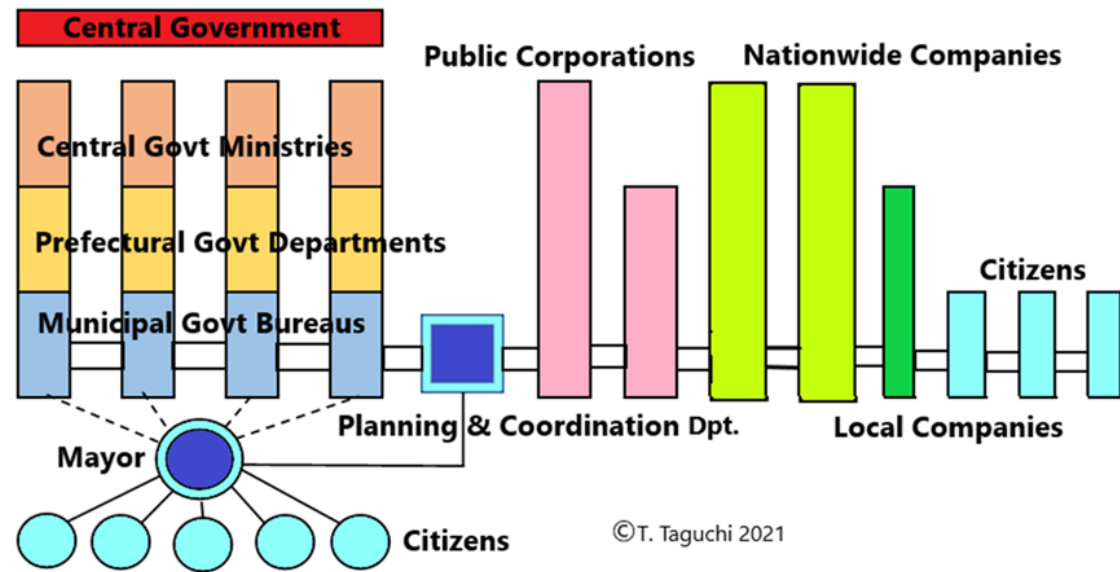
- Why Yokohama city insisted strongly undergrounding of motorway ?
- Actual process of coordination between concerned bodies ?
- Example in the 1960s useful for current situations surrounding Local Governments ?

Undergrounding motorway project needed coordination among various public administrations.

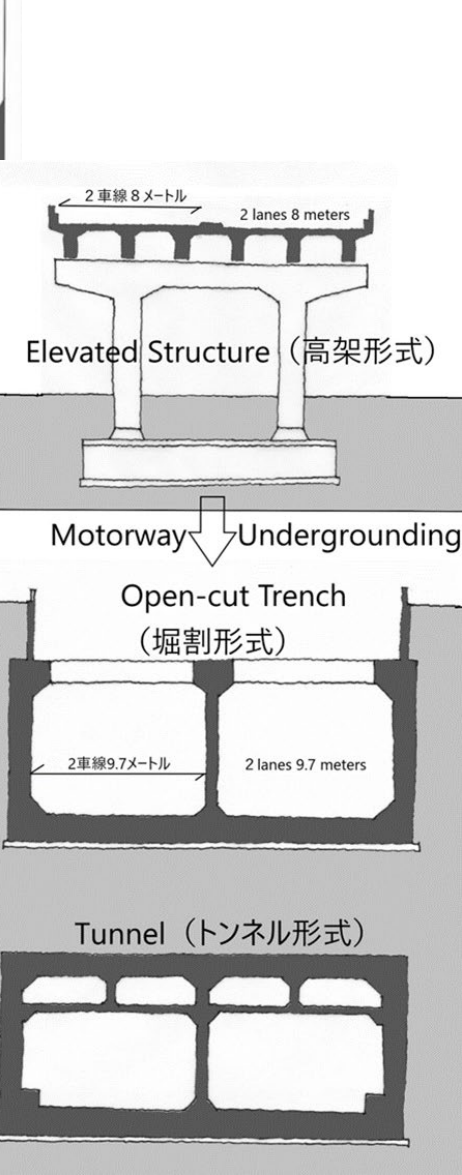
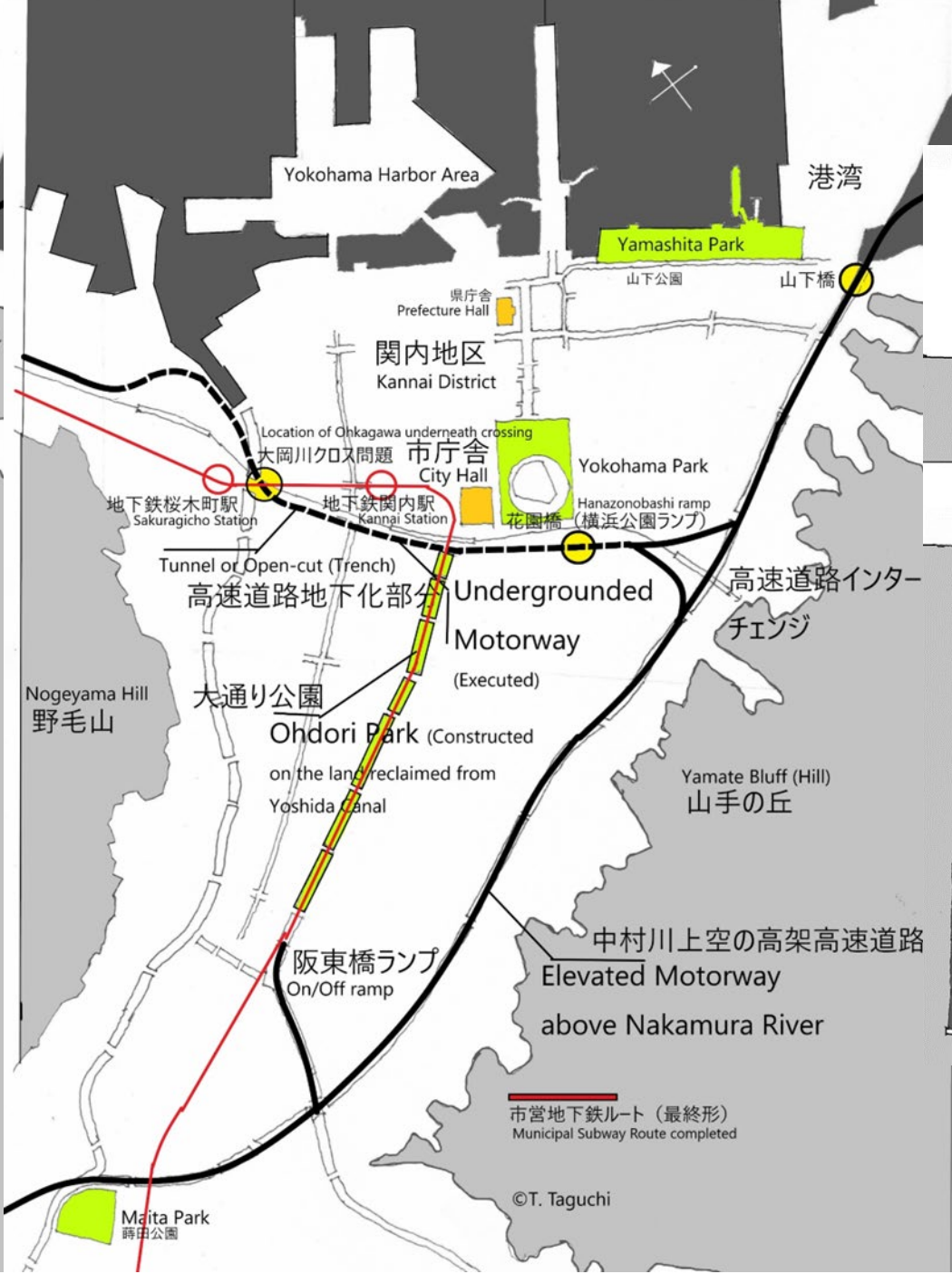
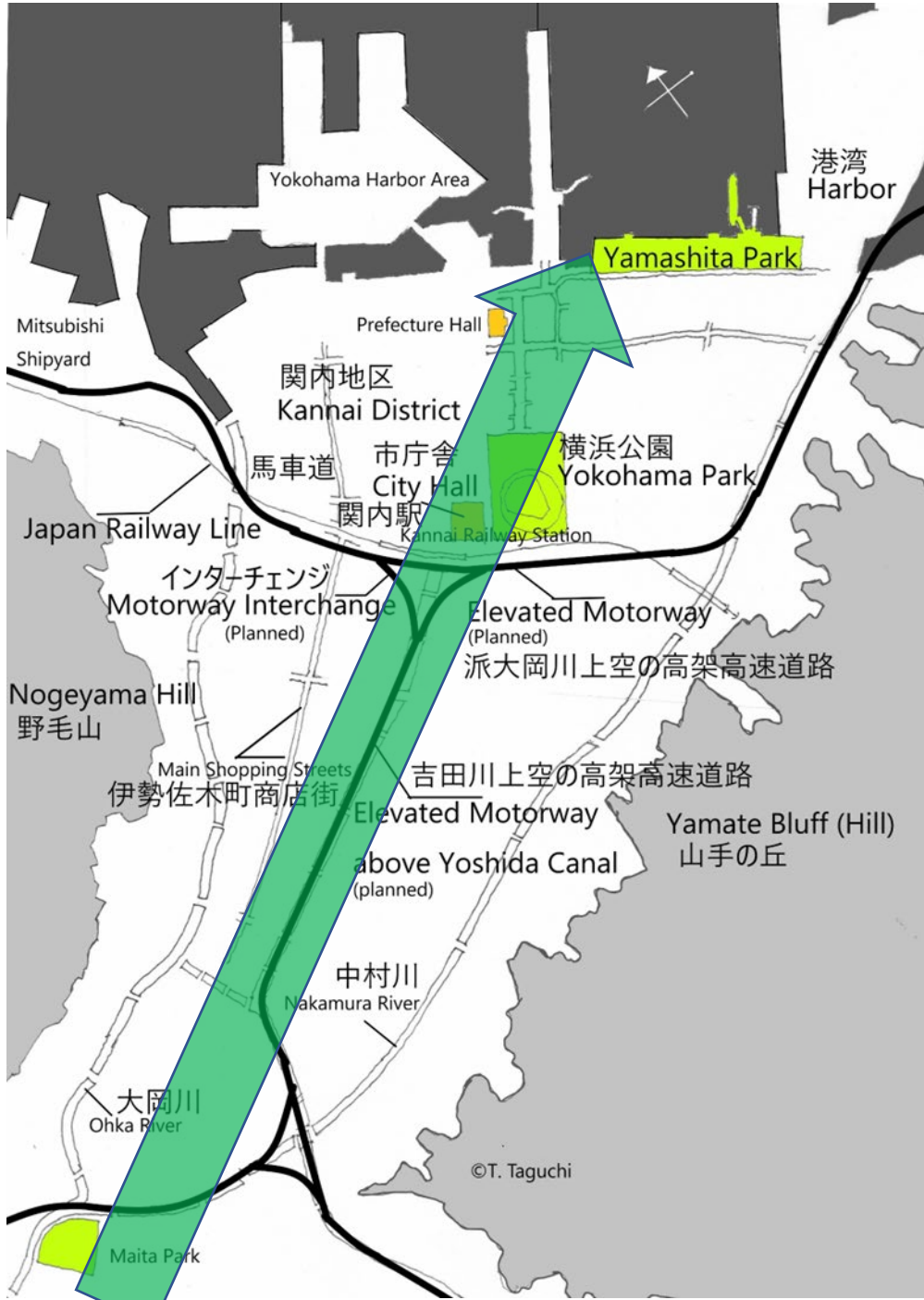
- Local government of Yokohama city
- Innovative mayor, Asukata, and progressive planner, Tamura.
- Independent local govt with its own integrated future plan

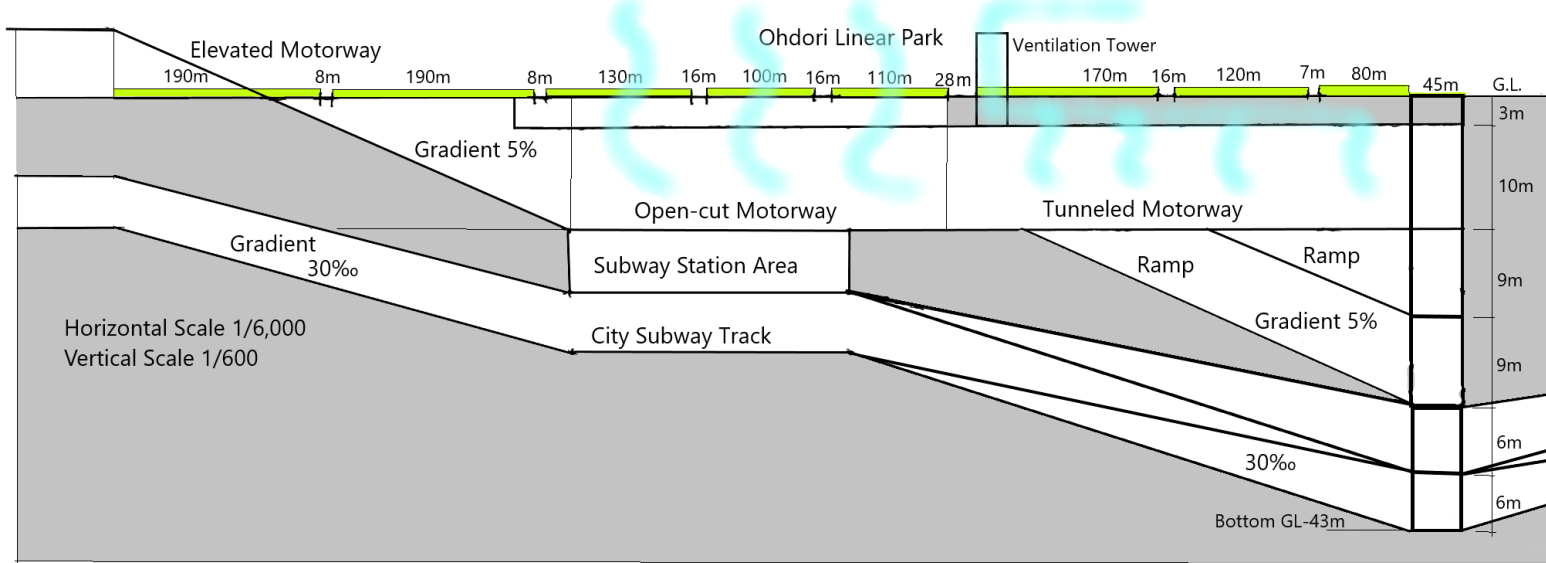


Old structure of layered administrations



Tamura's concept of planning & coordination mechanism





Undergrounded 2.3km in the city centre and Linear Park



