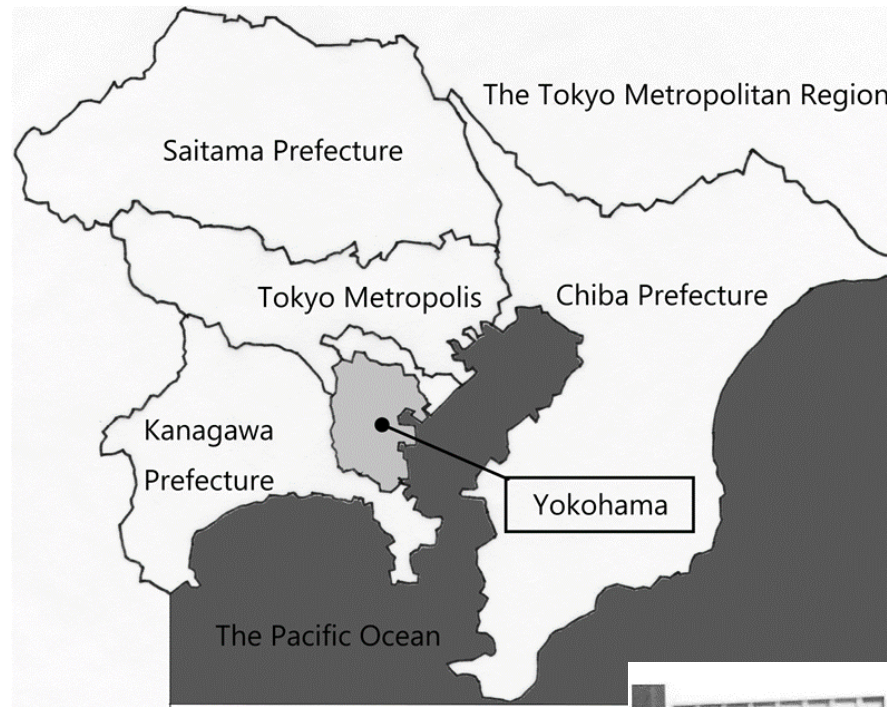


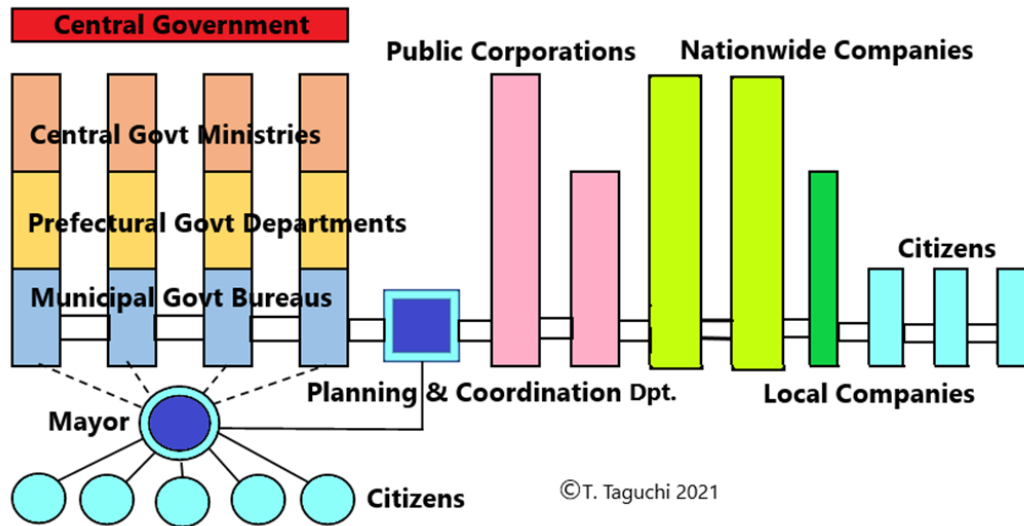
Local government coordination in the 1960s Yokohama, Japan: The case of the inner- city motorway project

1. Regional Values supported by citizens vs.
National Values dominated by companies
2. Democratisation of Planning for citizens
3. Local Governance by mayor and officials
with citizen-oriented philosophy

Toshio Taguchi, Akira Tamura Memorial-A Town Planning
Research Initiative NPO, Yokohama, Japan.



Tamura and Asukata



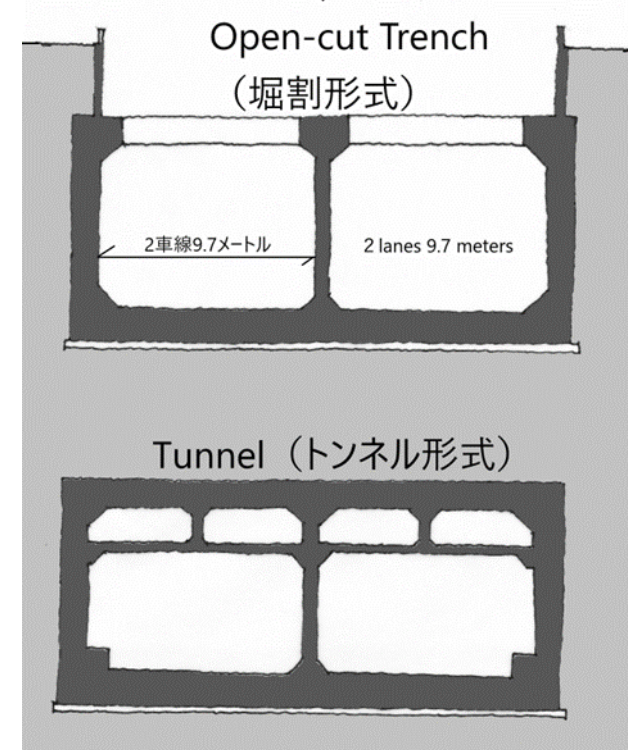
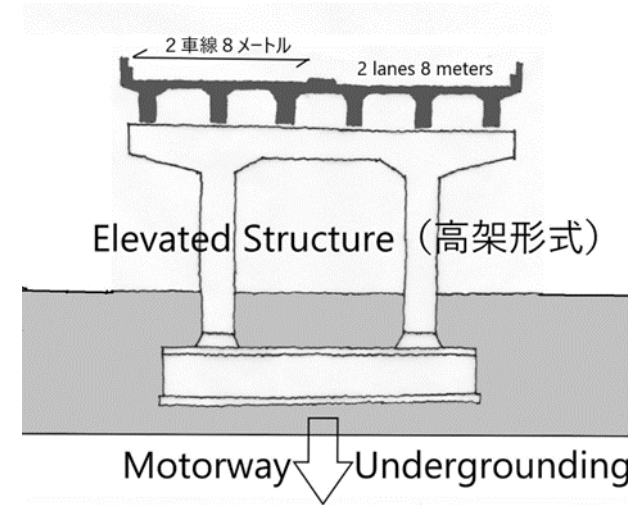
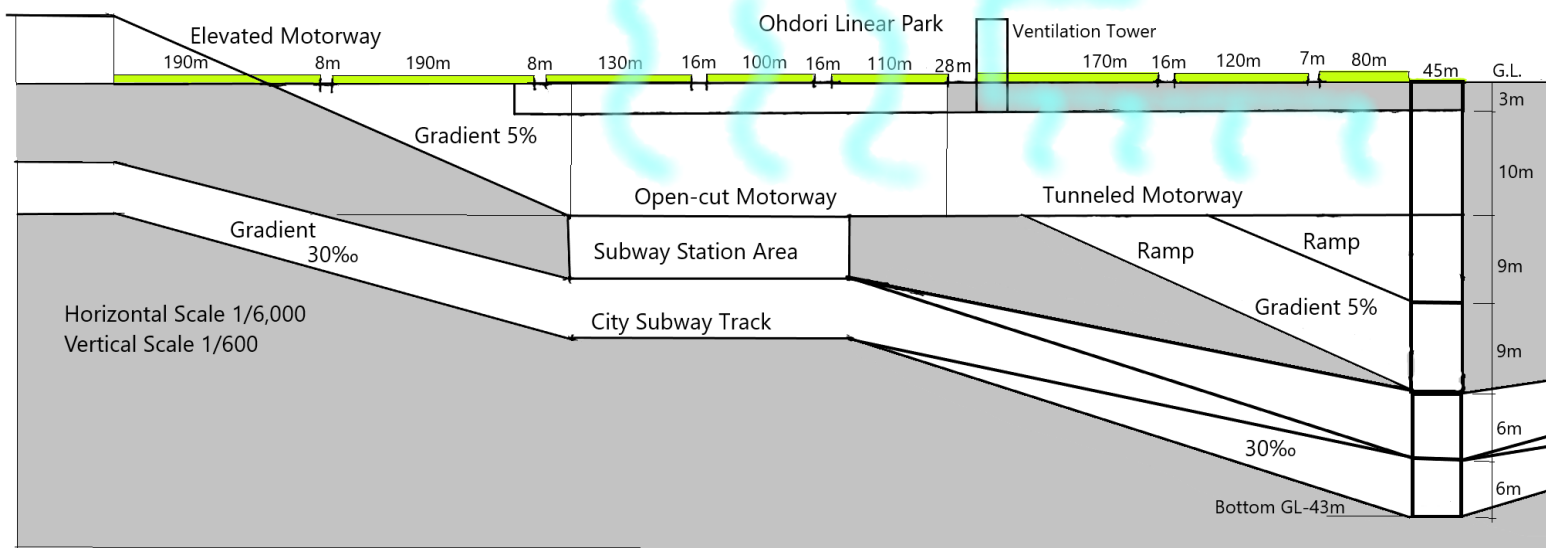
Concept of Coordinative Mechanism



首脳部会議の出席者 1976年1月 飛鳥田一雄資料
後列右から飛鳥田一雄市長、松宮理一郎助役、田村明企画調整局長、松林義幸総務局長、
前列右から大場正典助役、鳴海正泰専任主幹、石井敬一郎財政局長、木下富士男市長室長

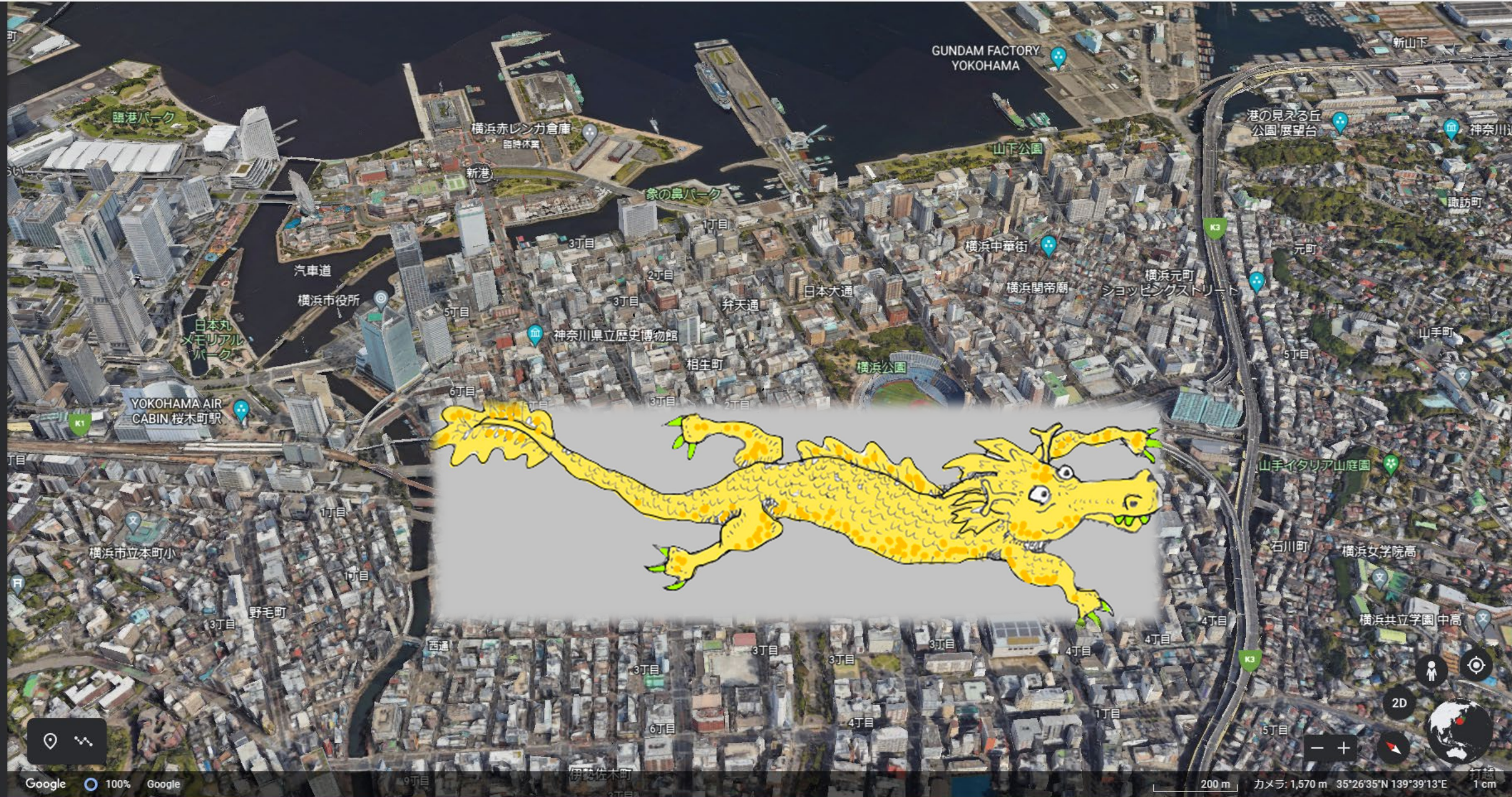


市営地下鉄ルート (最終形)
Municipal Subway Route completed



Undergrounded 2.3km in the city centre and Linear Park







Yokohama in 2021

Young city workers in the 1970s

